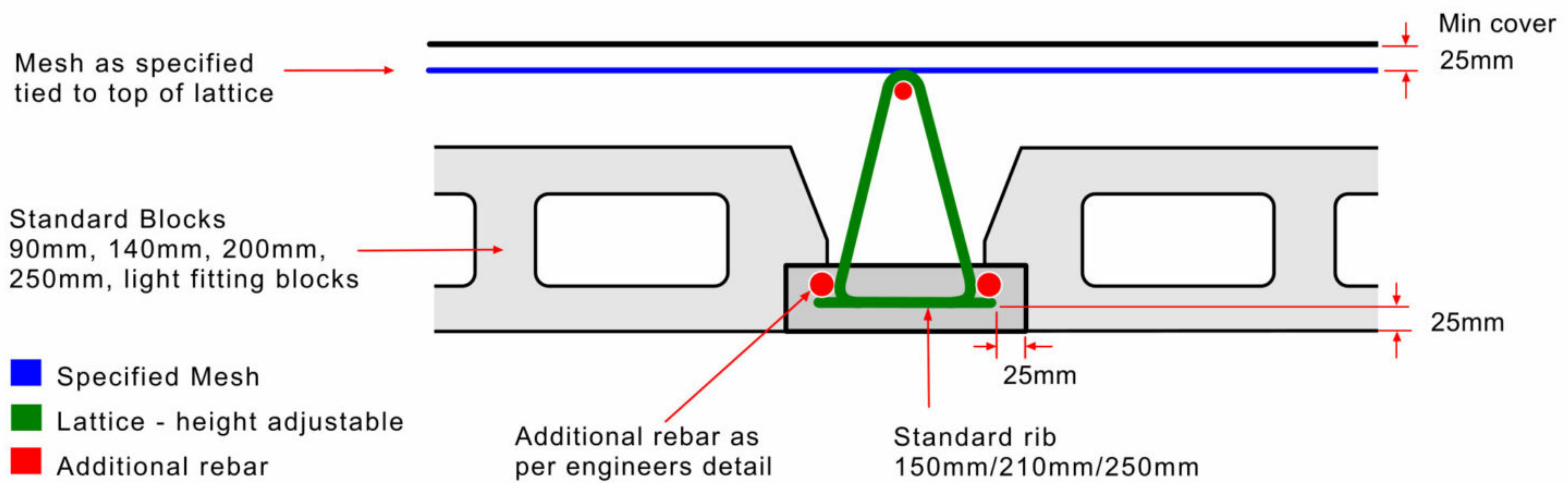


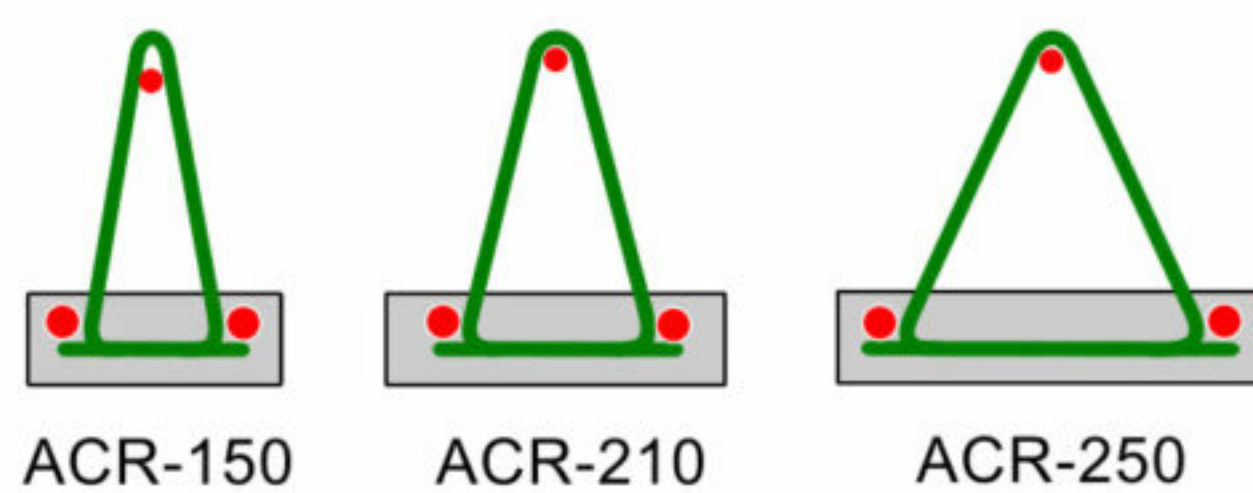
ALGOA CEMENT R&B SLAB

Algoa Cement Lattice

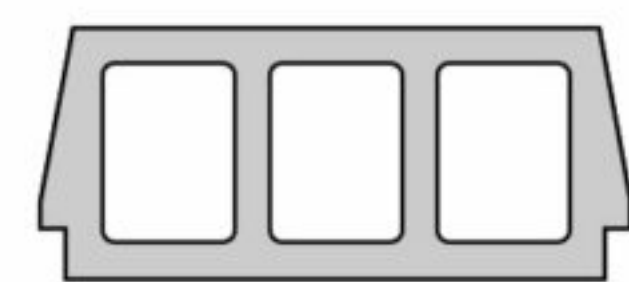
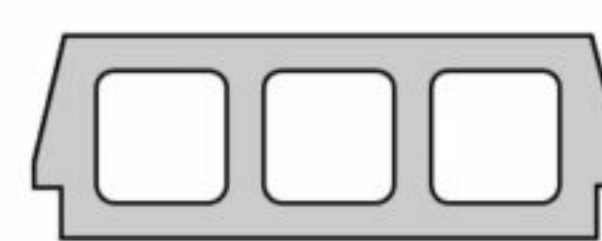
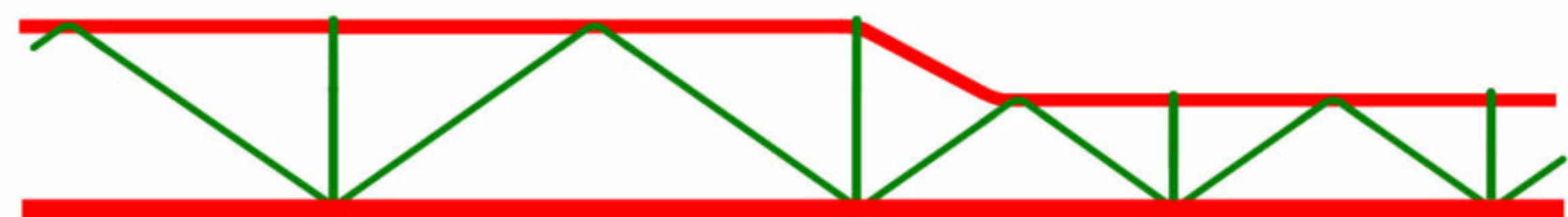


- Secure bond between precast concrete and in situ concrete due to the heightened lattice.
- Any profile of lattice can be achieved to accommodate stepping of slab depth.
- Secure fixing of additional rebar.
- Quality through automated weigh batching & lab testing
- Delivery - short, quick turn around time.

Front View Lattice



Typical Cantilever Section



Manufacturers of Precast Products Since 1934

ALGOA
CEMENT.CO.ZA

Quality Products Delivered On Time

3 Chrysler Street, Markman Industria, Port Elizabeth, 6001 Tel: 041 461 2900 Fax: 041 461 2903

E-mail: reception@algoacement.co.za www.algoacement.co.za

